

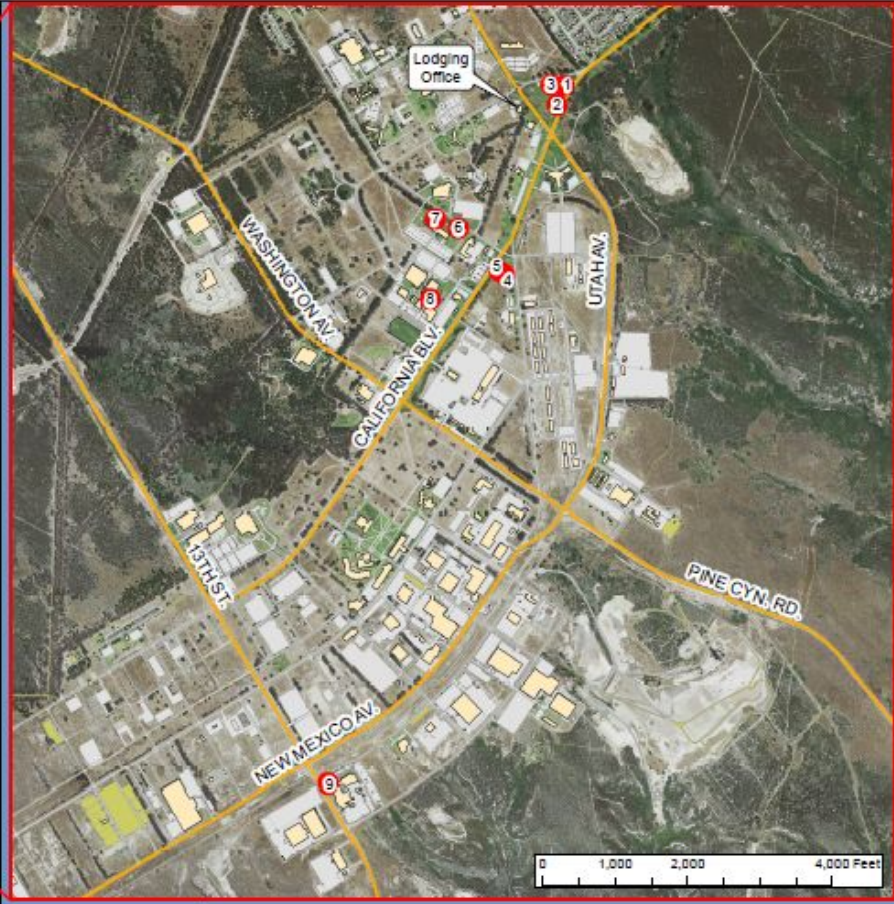
A **LODGING AREA A**
 TLF's Visiting Quarters and DV Quarters
 Bldgs 13007 and 11040-11042

B **LODGING AREA B**
 Visiting Quarters and DV Quarters
 Bldgs 13851-13866

C **LODGING AREA C**
 Large TLF's
 Bldgs 12901-12915

Your Guide to Vandenberg AFB

- | | |
|---|---|
| 1. Airmen Leadership School (Bldg 11025) | 18. Fitness Annex (Bldg 9005) |
| 2. Airmen & Family Readiness Center (Bldg 10122) | 19. Golf Course/ The Turn Grill (Bldg 1338-off base) |
| 3. Auto/Car Wash (Bldg 10601) | 20. Library (Bldg 10343) |
| 4. Base Exchange (Bldg 10400) | 21. Lodging/Postal Service Center (Bldg 13001) |
| 5. Balfour Beatty/Housing Office (Bldg 602) | 22. Main Office - 30FSS (Bldg 11013) |
| 6. Bowling Center/SpareTime Grill (Bldg 10366) | 23. Main Post Office (Bldg 10373) |
| 7. Breakers Base Restaurant (Bldg 13330) | 24. Outdoor Rec/ Information, Tickets, and Travel/Engraving shop (Bldg 10250) |
| 8. Chapel (Bldg 16200) | 25. Pacific Coast Club/Barber Shop/Pacific Coast Coffee (Bldg 11070) |
| 9. Child Development Center (Bldg 16177) | 26. Pool (Bldg 10133) |
| 10. Class Six (Bldg 10317) | 27. Shoppette (Gas Station)/Car Care (Bldg 14400) |
| 11. Cocheo Park & Pavilion (Bldg 12300) | 28. Tennis Courts |
| 12. Commissary (Bldg 14300) | 29. Track & Sports Fields |
| 13. Education Center (Bldg 13640) | 30. Vandenberg Center (Bldg 13406) |
| 14. Old Ed. Center/WAPS Testing (Bldg 13640, Bldgs 16130, 35, 40) | 31. Vandenberg Dry Cleaning/Laundry Mat (Bldg 13700) |
| 15. FAMCAMP (Bldg 5010) | 32. Youth Center & Annex (Bldg 16170 & 16156) |
| 16. First Term Airmen Center (FTAC) (Bldg 10364) | 33. 30th Medical Group |
| 17. Fitness Center/Jamba Juice/Natural Knead Massage (Bldg 10130) | 34. 30 MSG/CPO/HRO/SATO/Admin (Bldg 11777) |



Point #	Point of Interest
1	Minuteman III Display
2	SrA Daniel J. Johnson Memorial
3	Medal of Honor Memorial
4	Pershing M-47 Tank Display
5	Korean War Memorial
6	P-40 Aircraft Display
7	War Memorial
8	POW/MIA Memorial
9	Minuteman I Display

Base Points of Interest/Attractions

- Beach
- General POI
- Observation Area
- Peak
- Point
- Recreation Area
- Primary Roads

Map Print Date: 5/23/2013